

*In the near future, mobile services and the use of mobile telephones is destined to grow and change the way people work. Therefore, getting in touch with people on their mobile telephone or in their office will be more and more necessary.*

*Fixed to mobile rates are extremely high and represent today 50% of the company telephone landline telephone costs, and this figure will certainly increase.*

*The GSM/GPRS CellRoute is the cost effective solution for reducing the telephone bill of your company.*



## GSM/GPRS Gateway CellRoute analogue

Cuts the telephone costs of your business in an easy way!

### **Reduces fix to mobile call costs of your business**

With GSM CellRoute you can immediately start saving on the telephone bill of your business using the telephone rates of mobile operators for calls originated by fixed telephones in your company. You can take advantage of one of the several offers of the mobile carriers thus dramatically saving on outgoing fixed to mobile calls. Furthermore, CellRoute can receive inbound calls from the GSM network, allowing your company mobile telephones to call you at mobile to mobile rates.

### **Connects to any PBX system**

CellRoute connects to the PBX system just like a regular analogue line, thus being compatible with any analogue PBX system and immediately ready to use.

Just program your LCR (Least Cost Routing) and immediately start saving on all your mobile calls.

### **Does not change your work habits**

CellRoute connects to the PBX system and allows to use a GSM line for mobile calls from regular telephones.

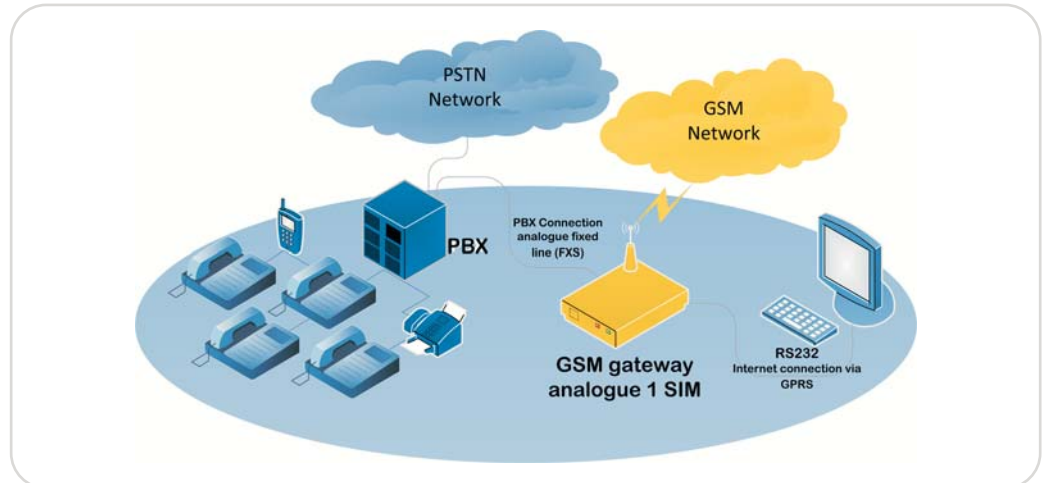
Your work habits will not change: just connect the GSM CellRoute to the PBX system and, if this is equipped with an LCR system, all calls to mobile phones will be routed to the new GSM line, thus providing immediate benefits.

### **Cost effective and with an immediate ROI!**

The CellRoute GSM interface is a must for every business and provides immediate economical benefits as well as a measurable investment return in just a few months of usage.

In order to optimise at best the saving, you can use Blue's Professional, that will allow you to monitor the trend of your telephone traffic and bill, in order to timely add extra GSM lines according to the real needs of your company.





## Telephone, data and fax

CellRoute is the most suitable solution for unattended connections including telemetry, remote controlled devices, security systems and remote data retrieval. Furthermore, you can connect you CellRoute to the RS232 port of a compatible PC using the serial cable for setting up a GPRS Internet connection or sending and receiving faxes using Microsoft Windows® or Winfax® software.

## Features

- GSM network features supported (subject to network support)
- Call waiting feature
- Data RS232 serial port for PC connections using the provided cable (for sending and receiving faxes and Internet connections)
- Internal backup battery (11 hours of standby and up to 2 hours of conversation)
- Caller Line Identification

## Technical Features

### GSM gateway

**Voice bands**  
E-GSM 900MHz,  
GSM 1800MHz,  
GSM Phase 2+

### Transmit power

Class 4 (2W) for E-GSM 900MHz  
Class 1 (1W) for GSM 1800MHz

### Data connection

up to 85.6KB via GPRS

### Antenna

Integrated omni directional Antenna  
SMA connector for external antenna (optional)

### Telephone interface

DTMF controlled call  
Line voltage 48V  
Current 40mA  
Impedance 600 Ohm  
Call ring 70Vrms

### Physical interface

Analogue Telephone / RJ11  
RS232 data port / RJ45  
GSM antenna  
Gold plated SMA

## Which SIM cards should I use?

- a GSM SIM can be used (H3G USIMs cannot be used)
- all mobile operator services such as SMS services should be disabled
- for CLI restriction (caller line identification restriction), please enquire your mobile operator

